

Qlik Sense Training: from Zero to Wow

Our two-day Sense training course enables you to confidently design and build attractive, efficient and scalable applications. Our trainers are all senior Qlik consultants; when they are not delivering training they are at the coal face, delivering inspired solutions for our clients.

Get up to Speed Quickly

Our two-day instructor-led Sense course starts you from a blank page and builds up to a multi-paged application which utilises all of the standard Qlik charting objects.

The course is developed by recognised Qlik expert, Steve Dark, and has a strong focus on best practices. It doesn't just instruct you how to use the various objects, it also explains why you might choose to use them.

Course Structure

Day 1 We start by looking at some existing Sense applications and explore what makes a good application. We then load some real-world open data (MOT Test results) and start to analyse it. By lunchtime you will be able to drill into the data and make discoveries. We explore each of the objects used in detail.

Day 2 We do more data cleansing and expansion and look at some of the best practices for Sense development. Features such as Master Items and Geographical Maps are explored, and we polish our application for a professional look.

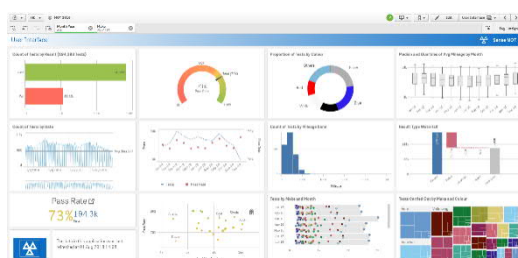
For those who wish to dig a little deeper, we bring in additional data tables and blend data from across sources. More advanced expressions are also built, using Set Analysis syntax.



Course delivered virtually or at Ocean House, Bracknell



Steve Dark; Director, Qlik Luminary Alumni, Community MVP and the course designer.



Find Out More About our Training

Full details of our next two-day Sense course and answers to some FAQs can be found on our website:

<https://www.quickintelligence.co.uk/training/qlik-sense-training/>